

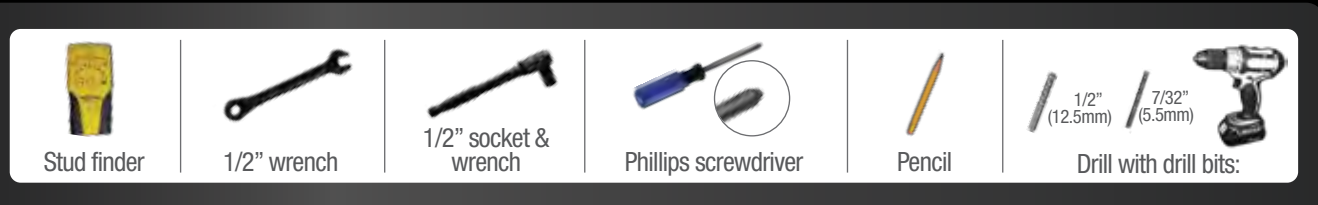
# VIZIO®

## XM-F1300

### QUICK START GUIDE

www.vizio.com

#### TOOLS NEEDED



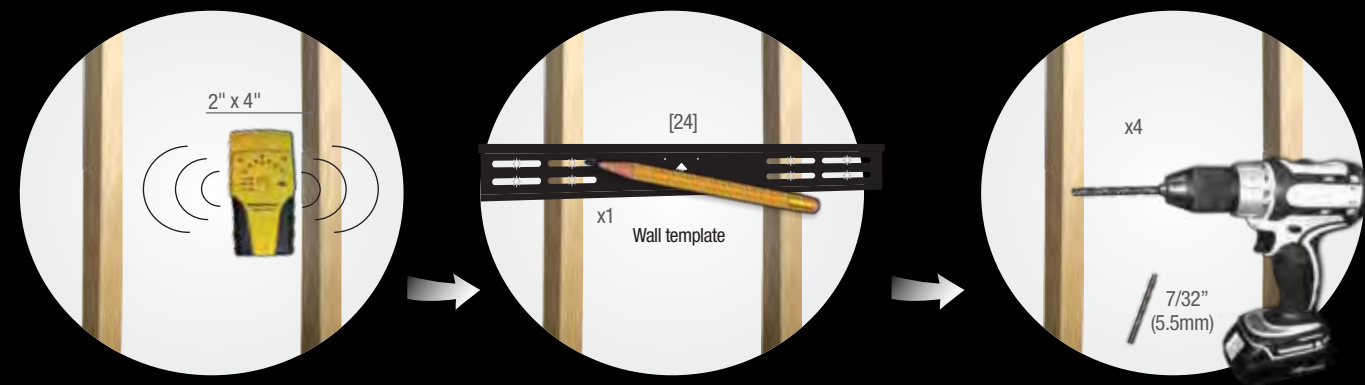
#### PACKAGE CONTENTS

Before starting assembly, verify that all parts are included and undamaged. If any parts are missing or damaged, do not return the item to your dealer, contact customer service number listed on the back cover. Never use damaged parts.



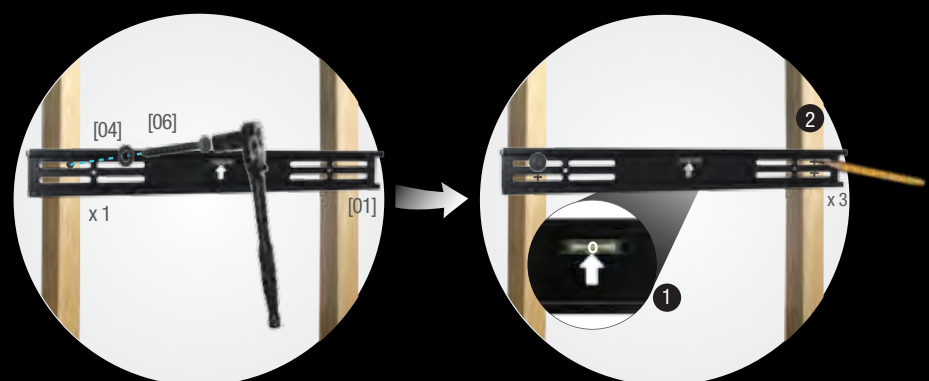
#### MOUNTING TO WALLS WITH WOOD STUDS

**CAUTION:** The wall covering (drywall, lath, plaster, and the like) may not exceed 1/2 inch (12.7 mm) thickness.

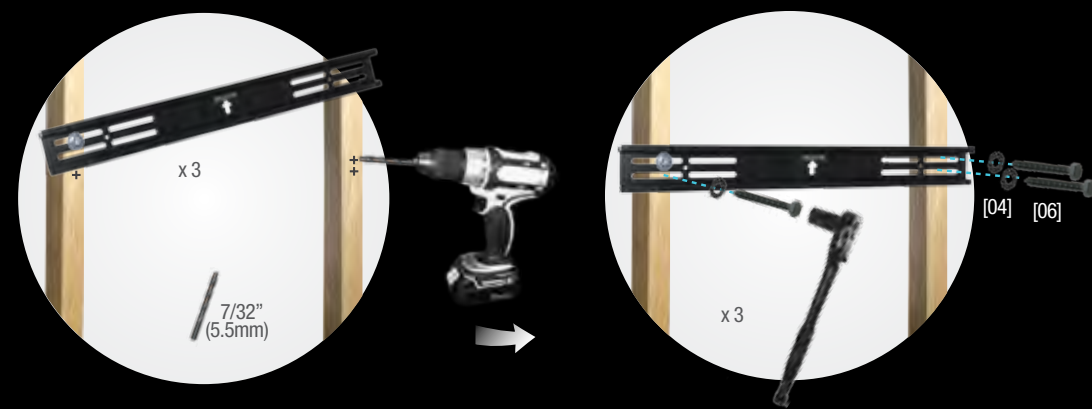


#### MOUNTING TO WALLS WITH WOOD STUDS (CONT.)

Secure the first lag screw to a wood stud but do not tighten completely.

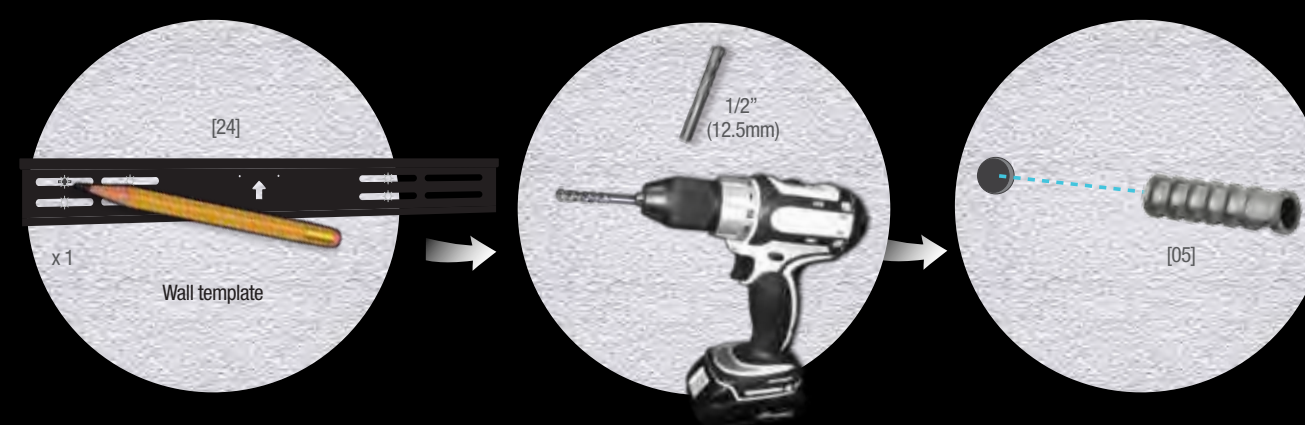


Secure the remaining lag screws to wood studs securing all four tightly.

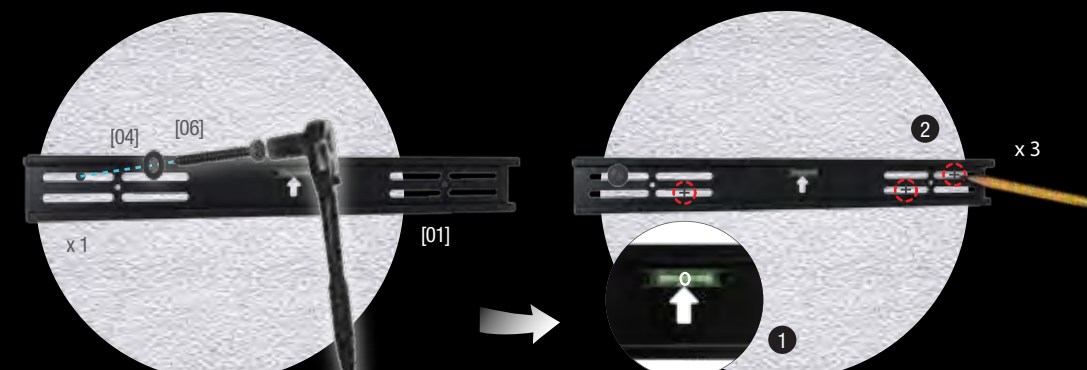


#### MOUNTING TO SOLID CONCRETE WALLS

**CAUTION:** Concrete anchors must be flush with the concrete surface. Tap the anchors [05] into the 1/2" holes so they fit tightly.

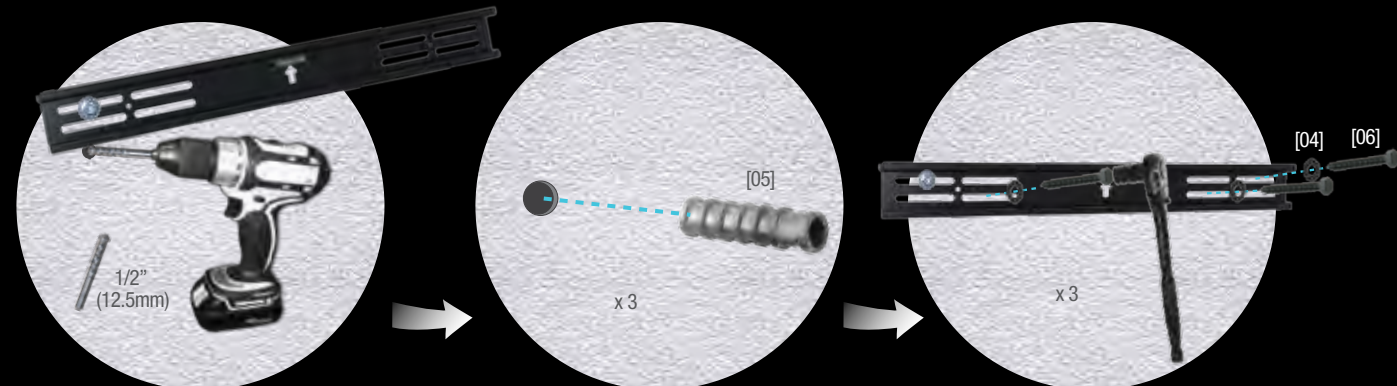


Secure the first lag screw to concrete wall but do not tighten completely.

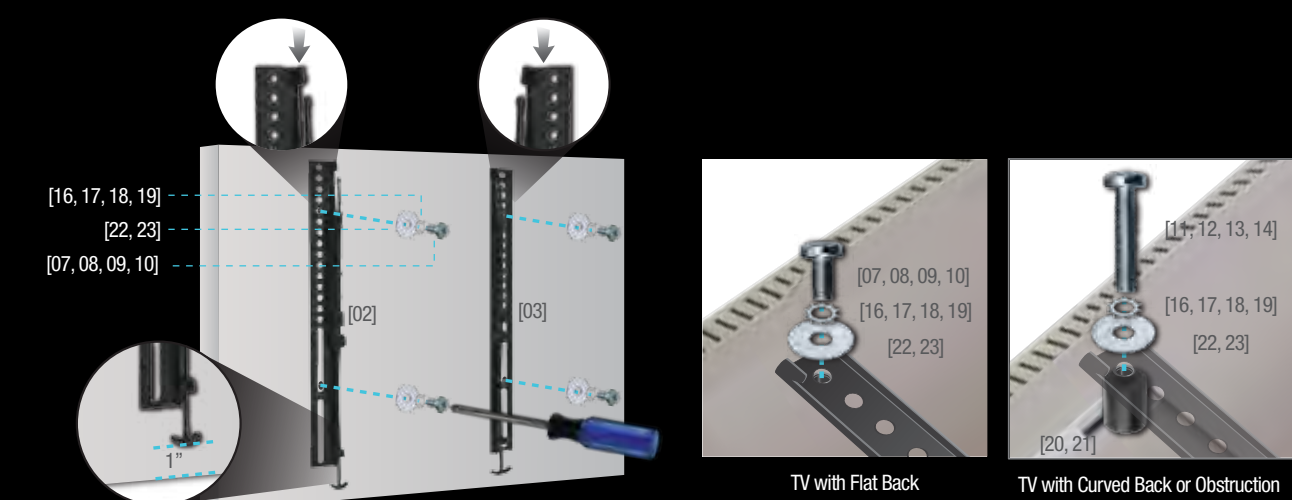


#### MOUNTING TO SOLID CONCRETE WALLS (CONT.)

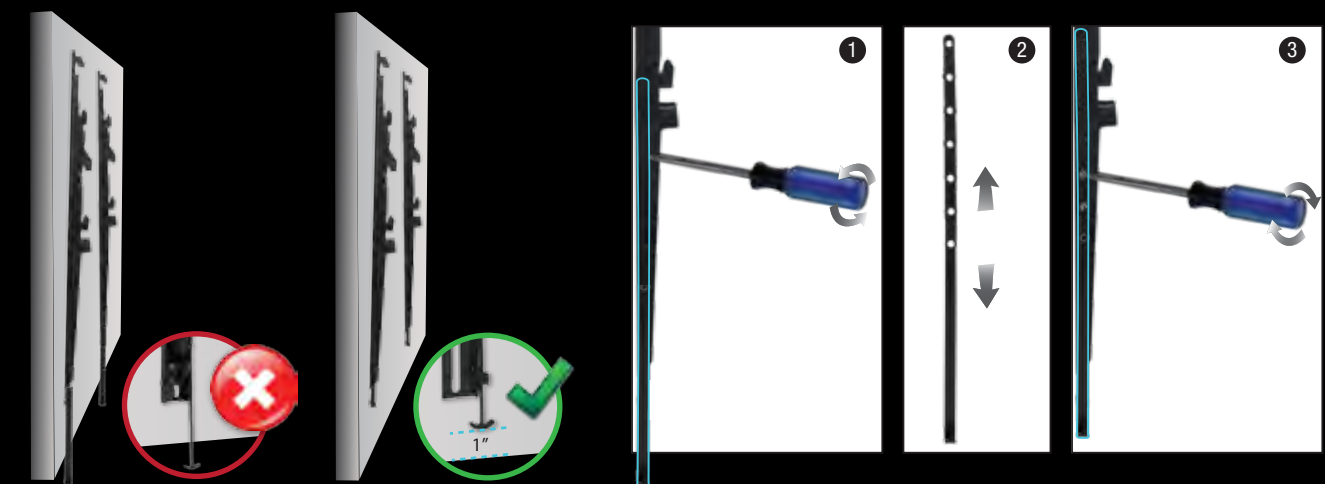
Secure the remaining lag screws to the concrete wall securing all four tightly.



#### ATTACH THE SCREEN BRACKETS

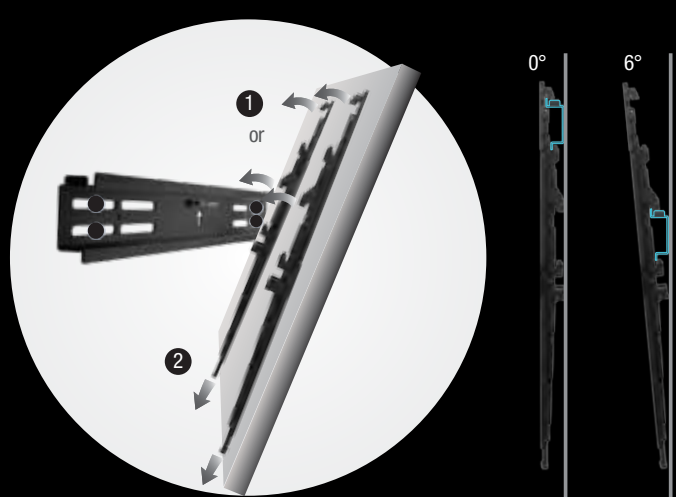


#### ADJUST SCREEN BRACKETS (OPTIONAL)

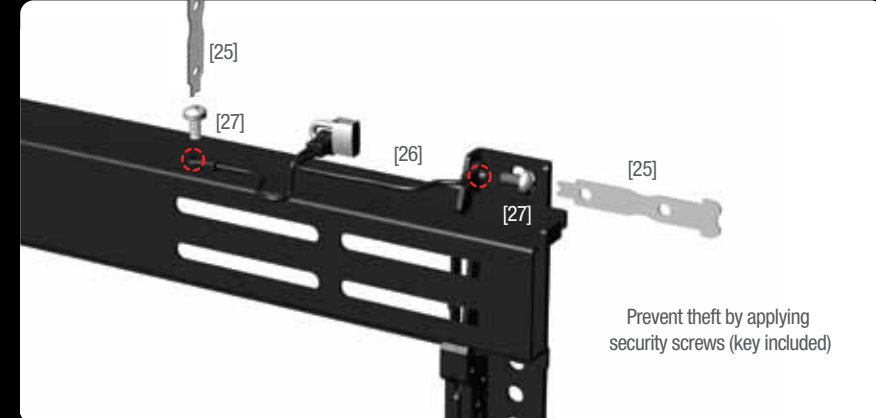


#### HANG THE SCREEN

- Hang the screen on the wall plate. Use the top hooks for flush mounting or the middle hooks for a 6° tilt.
- Pull the lock releases and let the screen tilt down into place releasing the locks to secure the screen. For rear access, pull the latches down and tilt the screen up. To resecure the screen, pull the lock releases down and let the screen tilt down.



#### SECURITY LOCK FEATURE



#### IMPORTANT SAFETY INSTRUCTIONS

- When using this tilt mounting system, basic precautions should be followed, including:
- Follow the entire installation/user's manual and the important safety instructions before attempting to install or use this mounting system.
  - Manufacturer is not liable for damage or injury caused by incorrect mounting, assembly, or use.
  - This mount fits most screens from 26" to 55".
  - The maximum screen and weight this mounting system can support is 55" and not more than 130 lbs (59 Kg).
  - Attaching a screen that is heavier than the maximum weight specified above may result in instability, and possible personal injury.
  - Only attach this mount system on vertical walls as instructed in this manual.
  - If you have any doubts about the ability of the wall to support the TV and the mounting system, contact a qualified contractor.
  - This product contains small items that could be a choking hazard if swallowed.
  - Keep these items away from children.
  - For indoor use only.

#### TELEPHONE AND TECHNICAL SUPPORT

For technical assistance contact our VIZIO Technical Support Department via email or phone.  
Email: techsupport@vizio.com  
(877) 698-4946 Fax: (949) 585-9563  
Hours of operation: Monday - Friday: 6 am to 9 pm  
Saturday - Sunday: 8 am to 4 pm

Please have your VIZIO model number, serial number, and date of purchase available before you call.  
**VIZIO**  
39 Tesla • Irvine, CA 92618, USA  
Telephone: (949) 428-2525 Fax: (949) 585-9514  
Web: www.vizio.com

#### ONE-YEAR LIMITED WARRANTY & INSURANCE

Covers units purchased as new in United States and Puerto Rico Only VIZIO warrants for a period of one (1) year from the date of purchase to the original purchaser of its mounting brackets, that the bracket shall be free from defects in assembly, material, or workmanship and will repair or replace, at its sole discretion, a defective bracket free of charge, provided the bracket is returned to VIZIO with shipping prepaid by purchaser. Unauthorized service or repairs by anyone other than VIZIO or a pre-approved repair facility renders this warranty void and shall release VIZIO from any further responsibility or obligation.

The protections described herein shall be IN LIEU OF any other warranty, express or implied, including but not limited to, any warranty of MERCHANTABILITY or FITNESS FOR A PARTICULAR PURPOSE.

In no event shall VIZIO be liable for incidental, special, direct, indirect consequential or multiple damages such as, but not limited to, lost business or profits arising out of the sale, use or inability to sell or use any VIZIO products, even if advised of the possibility of damages. This Limited Warranty & Insurance gives you specific legal rights, and you may also have other rights, which may vary from state to state. Some states do not allow the exclusion or limitation of incidental or consequential damage so the above limitations may not apply to you. This Limited Warranty & Insurance is valid only for the original purchaser of the product and only if the original purchaser registers the purchase on-line at www.vizio.com or by mailing a copy of the purchase receipt (showing the date of purchase) and product warranty registration card to VIZIO, 39 Tesla, Irvine, CA 92618. All damage claims must be made to VIZIO within fifteen (15) days from the date of the occurrence and must be accompanied by the purchase receipt for the damaged bracket or this Limited Warranty & Insurance is void. This Limited Warranty & Insurance is only valid in USA and Canada. To make a warranty or insurance claim, please call (877) MY VIZIO (877-688-4848) within fifteen (15) days of its occurrence. Please provide to us or have the following information available:

- The date of the occurrence and the part number of the VIZIO bracket involved.
- The Component that was used with the VIZIO bracket at the time of the occurrence.
- The Component that was damaged during the occurrence and the extent of the damage.
- A detailed description of any additional damage from the occurrence.
- A legible copy of the original receipt showing the place and date of purchase of the VIZIO bracket.
- A legible copy of the original receipt for the damaged Component.
- Photograph of any claimed damage.
- Serial number which is located on the carton box and the wall plate.

\* Failure to perform in accordance with that bracket's specifications sheet or product manual.  
\*\* Properly installed in accordance with that bracket's installation instruction sheet or bracket manual and only when mounted on approved surfaces.  
\*\*\* VIZIO reserves the right to require additional supporting evidence to substantiate any additional damage claims.